




**Alderney**  
Wildlife Trust

# 2025 Review

**Study, Champion, and Protect Alderney's Wildlife**



A photograph of a lush woodland. In the foreground, a path is covered with green ferns and other low-lying plants. Several large, mature trees with thick trunks and dense green foliage stand in the background. The scene is captured from a low angle, looking up towards the canopy.

“Our mission is to champion, study, and protect Alderney’s wildlife, fostering a thriving island where natural habitats are valued for their vital role in shaping a sustainable future for Alderney and addressing the climate and ecological emergencies we face as a community.”

*Alderney Wildlife Trust Strategy 2030*



Edible crab | Poppy Brennan



Fulmar | Joshua Copping



Gannet | AWT staff



Puffin | Neil Aldridge



Eelgrass | Jenni Godber

## Our Vision for 2030

*“By working inclusively with our community, we are committed to securing Alderney’s future sustainability. Through education and collaboration, we aim to empower our community to act on behalf of nature ”*

Our 2 principal goals over the next 5 years are that



- at least **30% of the island’s natural environment will thrive** and be protected for wildlife by 2030.



- at least **25% of Alderney residents are taking meaningful action for nature** by 2030.





Alderney Homecoming tree planting in collaboration with Visit Alderney | Thanh Doan

Ocean movie screening during National Marine Week at The Blonde Hedgehog  
| Abigail de Castella



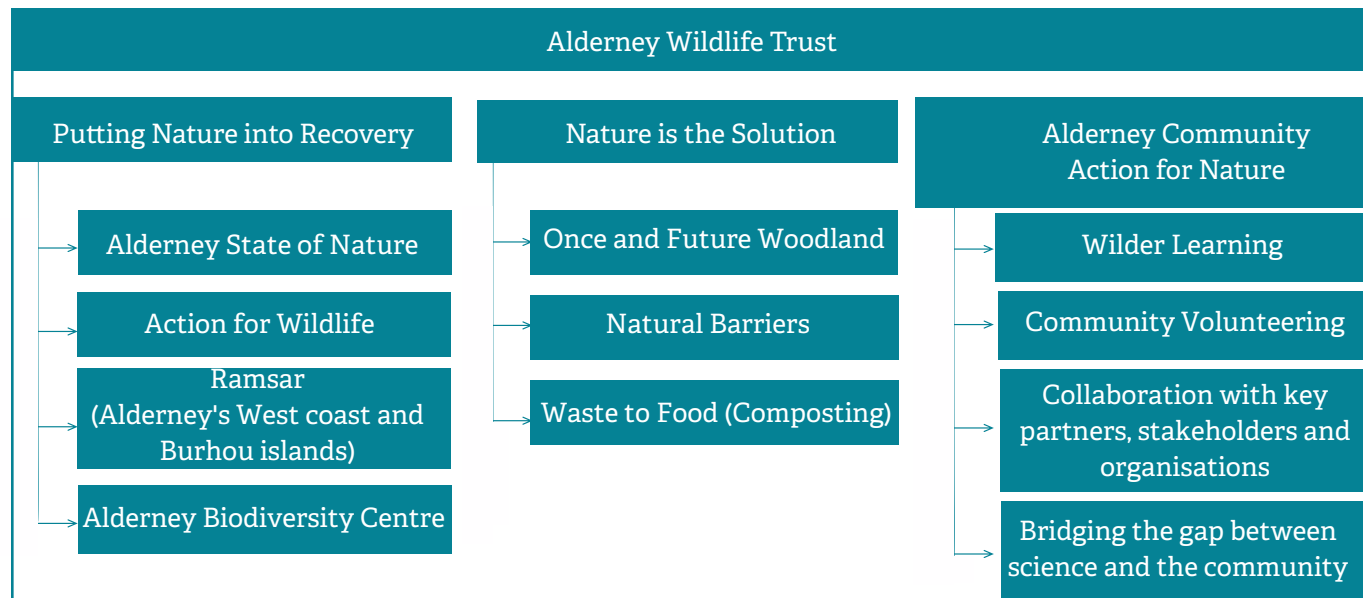
## Our Approach: Community Engagement

The AWT is committed to connecting people and nature through engagement, education, and conservation. All our actions must ensure that we are:

- **Listening** - to community voices and priorities and reflecting these in our planning and actions.
- **Communicating** - confidently and honestly about Alderney's natural environment to deepen the community's understanding of, and connection to, nature
- **Empowering** - demonstrating what is possible and empowering individuals of all ages, backgrounds, and abilities to act for nature;
- **Collaborating** - taking actions together with our community, co-producing programmes and events that reflect shared goals.
- **Partnering** - embracing diversity and creating partnerships with people, schools, charities, and local organisations.

# Key campaigns

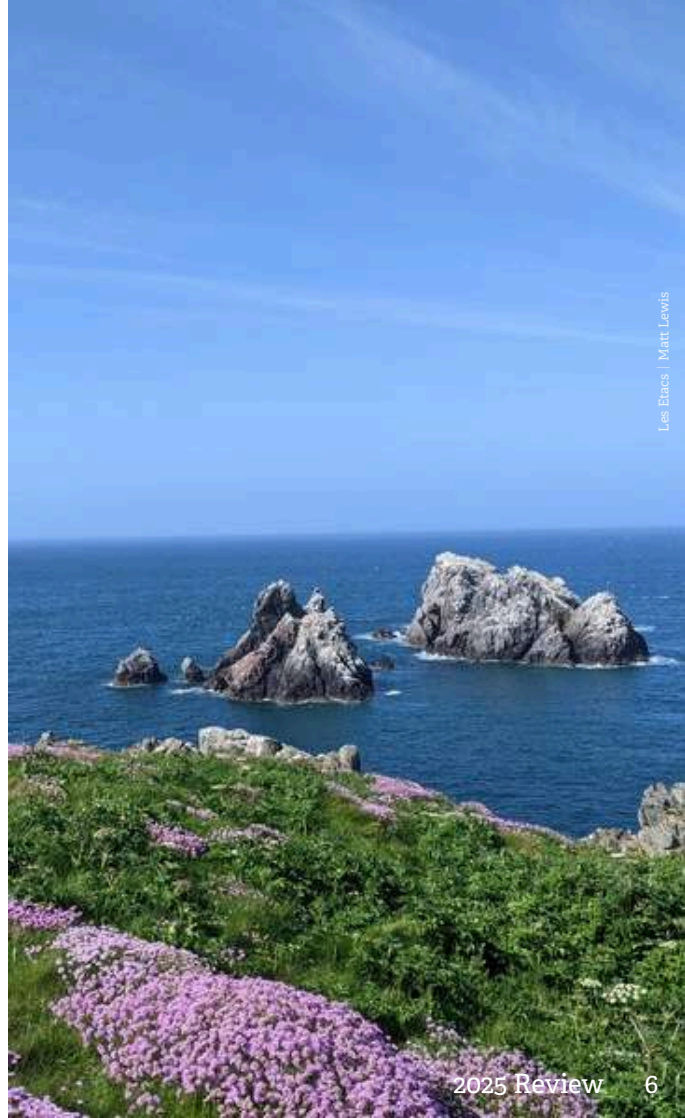
The AWT has 3 main workstreams which are encapsulated by our campaigns : Putting Nature into Recovery, Alderney Community Action for Nature, and Nature is the Solution. Here's a brief overview of what these campaigns entail.



In order to deliver on our campaigns we are dependent on the strength of our community support and our resident volunteers who provide a backbone for our administration, fundraising, research and action for wildlife.

# Putting Nature into Recovery

- **Alderney State of Nature:** completed Alderney's most robust assessment of the species and habitats of conservation and community importance, continued data collection and in-depth analysis of this monitoring data to understand how the species and habitats are changing over time to prioritise conservation action to protect them.
- **Action for Wildlife:** practical work to maintain and manage Alderney's Nature Reserves including Alderney Community Woodland, Longis Nature Reserve, Vau du Saou and Bonne Terre.
- **Ramsar:** continuation of our on-going work to support Alderney's Ramsar Strategy, research and provision of 25 pro-bono workdays as Ramsar Secretariat to the States of Alderney's Operations Team and the General Services Committee (GSC).
- **Alderney Biological Centre:** continued collation and management of biological, ecological, and environmental data from Alderney and its waters. Making this available through the newly revamped Alderney Biodiversity Centre website to residents, land managers, policy makers, researchers, commercial users, and other interested parties.



Le Eacs | Mat Lewis



# Nature is the Solution

- **Once and Future Woodland:** Alderney currently only has small, fragmented areas of woodland, and whilst expanding, most of this is in poor condition and made up of largely non-native trees. Working with landowners, we aim to re-introduce native species into and around our existing woodland to create a rich, diverse and healthy future woodland which will provide for our community's future.
- **Natural Barriers:** Sand dunes provide a vital service, protecting key areas of our island from the increasing impact of storms, yet they face threats from invasive species such as Sour Fig. In 2025 we mapped the extent of all the island's dunes and, with the help of the Guernsey Conservation Volunteers, cleared the majority of sour fig from Braye's sand dunes, making them more robust against future storms!
- **Waste to Food (Composting):** Food waste makes up perhaps as much as 50% of Alderney's exported black bagged waste. The AWT's trial composting project (sponsored by Fort Group) is experimenting with using both problem waste and invasive species such as sour fig to produce a useable, valuable compost to improve soil health.

# Alderney Community Action for Nature

- **Wilder Learning:** delivery of a learning pathway that empowers Alderney residents, especially young people, to develop skills, learn about and take action for nature. Development of a five-year strategy (2026–2030) to guide this work.
- **Community Volunteering:** delivery of community volunteering projects in partnership with a wide range of local organisations alongside development of a youth volunteering programme.
- **Collaboration** with key partners, stakeholders and organisations to co-create and deliver engaging events and opportunities for people to connect with Alderney's environment, leading to increased nature connection and action for nature.
- **Bridging the gap** between science and the community through engaging, inspiring and accessible engagement, we can share knowledge and bring confidence to the community.



Engagement table in Jersey | Alex Purdie



Source: Full with young volunteers | Abigail de Cosselle





**Alderney**  
Wildlife Trust

# Our Work

## Alderney State of Nature

The **Alderney Key Habitats and Species list has now been completed** and will be published in early 2026. The list incorporates conservation designations at global, regional and local levels, alongside the importance of habitats and species to members of Alderney's community. Findings from the Alderney State of Nature project have also fed into other projects, helping to focus our limited resources on Studying, Championing and Protecting priority habitats and species.

## Terrestrial surveys

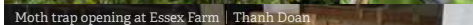
Alongside the Alderney State of Nature project, the team and volunteers also carry out **19 terrestrial surveys**. These include five monthly bee transects from March to October, five weekly butterfly transects from April to October, weekly moth trapping at Essex Farm and in a Longis Road Garden, a terrestrial bird census in the Community Woodland, and slow worm surveys during the summer months. We also completed the first ever condition assessments for woodland across the island to inform the Once and Future Woodland project.



Slow worm refuge check | Lou Collings



Woodland Condition Assessment | AWT staff



Moth trap opening at Essex Farm | Thanh Doan



Heathland Bird Survey | AWT staff

[www.alderneywildlife.org](http://www.alderneywildlife.org)



Glanville Fritillary | Sophie Mowbray



Species ID | Tara Cox



2025 Review 10



## Alderney State of Nature | Marine

Alderney may be a small island, but it supports an exceptional diversity of species. To better understand the health of Alderney's seas and its marine species, we carried out dozens of marine surveys throughout the year. This is the foundation for future protection and management plans.

- **Two eelgrass walkover surveys** (on Alderney) as part of the Bailiwick Eelgrass Exploration Project (BEEP), assessing the health of our eelgrass/seagrass beds.
- **Habitat assessments** a quantitative assessment of selected marine habitats within the Ramsar Site.
- **Seven Seasearch snorkel surveys**, with 11 recording forms submitted by trained volunteers. Snorkels were completed within Braye, Maggies and Longis Bays, which comprised recording marine species and habitats.
- **Nine Shoresearch surveys**, identifying marine species presence within our intertidal shores.
- **Four (boat-based) grey seal surveys** and two (land-based) observation surveys, monitoring abundance and population structure.
- **11 intertidal crab population assessments**, with over 680 crabs recorded by our citizen scientists.

Eelgrass survey in Longis Bay | Thanh Doan



Snorkelling in Maggie Bay | Lou Collings



Seal survey | Thanh Doan



Crab survey | Mel Broadhurst-Allen



Eelgrass | Iain Dixon



Seawater parameters survey | Lou Collings



Pollacks in Braye bay | Alex Purdie



Edible crab | Poppy Emmens



## Alderney State of Nature | Marine (cont.)



- **16 green ormer surveys** completed, with approximately 283 ormers found and measured, with 98 tagged to assess their movement patterns.



- Several **marine invasive non-native species assessments** (Pacific oyster and devil's tongue seaweed), which will help develop eradication strategies for 2026.



- **Five European eel surveys**, assessing the presence of young eels (known as glass eels), with one individual found at Longis Bay.



- **Four inshore plankton surveys**, identifying species presence within Clonque Bay and Longis Bay
- **29 seawater parameter monitoring surveys**



- Abundance and density assessments of the rare seaweed, the peacock's tail.



- **Three coastal erosion surveys**, outlining areas of erosion.
- **Nine marine litter surveys**, alongside AWT beach clean events.



## Seabird surveys in Ramsar site

To understand how Alderney's seabirds fare and their productivity, 20 seabird surveys have been conducted, running from March to October (peak time April-July).



- **Gannets:** 56% of the gannet pairs on Les Etacs fledged chicks in 2025, an increase from 46% in 2024. This year, productivity was also monitored on Ortac using drone surveys for the first time. In 2025, 50% of Ortac gannet pairs fledged chicks. Following a full census of the colonies in 2025, the overall population of Les Etacs and Ortac has increased by 11% since the last census in 2023. This means a recovery from bird flu is underway.



- **Ringed Plovers:** This year, we had 6 pairs of Ringed Plovers on Platte Saline and Clonque, unfortunately only three chicks successfully fledged from one nest.



- **Puffins:** The highest early season puffin raft count in 2025 was 195 pairs. Early season raft counts give an estimate of the number of breeding pairs as one partner will be incubating an egg in the burrow, while the other is on the sea rafting. This is an increase from 175 pairs in 2024, suggesting that Burhou's puffin population is stable.

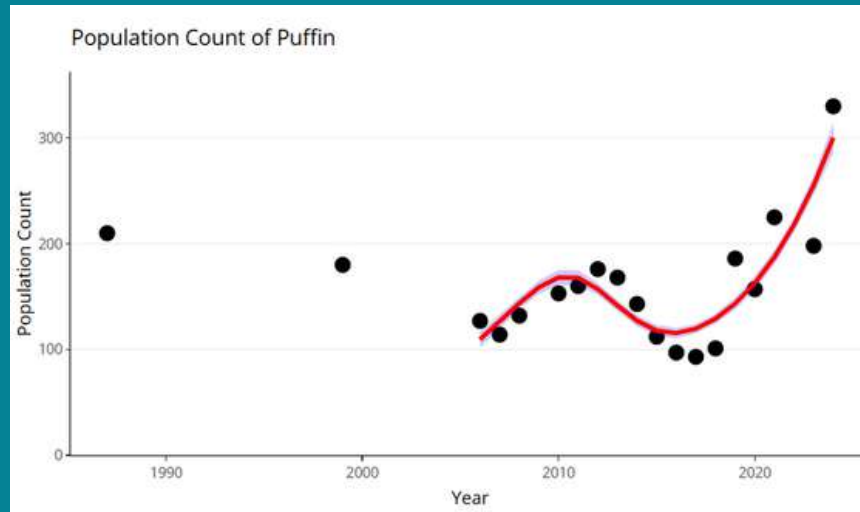


- **Fulmars:** 52% of fulmars in the West Cliffs area of Alderney successfully fledged chicks in 2025. This is the highest productivity since 2019 and the birds arrived back for the 2026 season on the 9<sup>th</sup> December 2025.

## Alderney Biodiversity Centre

- Data from 20 years of fieldwork has now been updated and made available online.
- The Alderney Biodiversity Centre website has been revamped. The updated portal (<https://alderneybiodiversitycentre.org>) makes it easy to search biological records and contribute your own observations. Everyone can use the site to explore species distributions and trends across Alderney. We are encouraging islanders and visitors alike to take up a hobby and start recording a species through the iRecord app as all the data from this flows into the Alderney Biodiversity Centre.

You can explore population trends of seabirds on Alderney over time and recent wildlife records on the island.



### Recent Records

#### Yellow Brain

(*Tremella mesenterica*)

WA583078 on 16/12/2025 by alex purdie



#### Barn Owl

(*Tyto alba*)

WA58580806 on 16/12/2025 by roland gauvain

#### Toad Spider

(*Nuctenea umbratica*)

WA583078 on 16/12/2025 by alex purdie



Screenshots from the website



## Action for Wildlife

- Alongside our work to study wildlife and habitats, to help 'put nature into recovery', we delivered **96 Conservation Volunteer sessions** in 2025. This represents a total of **1,421 volunteer hours** dedicated to nature conservation. None of this would have been possible without the commitment of our **26 dedicated Conservation Volunteers**.
- Working with the community, we planted trees in the Alderney Community Woodland and, recently, in the Peace Garden to create the Alderney Homecoming Woodland. In total, more than **800 native trees were planted**, including a diverse mix of species such as sessile oak, alder, elder, hawthorn, downy birch and crab apple.
- As part of the development of AWT's Reserves and Sites Management Strategy Plan 2026–2030, we sought community feedback through a public survey and received 21 responses, helping to shape the final draft.
- To protect Alderney's living seas and contribute litter data to the Marine Conservation Society (MCS) in support of their campaigning for healthy oceans, we carried out **nine MCS marine litter surveys** across the island. Together, these efforts removed 131.32 kg of rubbish from Alderney's shores.
- To give native species the space they need to thrive and to protect Alderney's sand dunes, **21 cubic metres of invasive sour fig** were removed.



Tree planting in the Community Woodland | Thanh Doan



Wetland restoration in Bonne Terre | George Tindall



Sour Fig removal in Braye | Thanh Doan



# Nature is the Solution

## Future Woodland

We're preparing to launch the Once and Future Woodland Project, a project where we aim to accelerate the expansion of tree cover in the right places to help restore Alderney's historic woodland habitat. Six major landowners are already engaged in discussions, and corporate partnerships are being explored. The pitch of the project won an award for start-up conservation project at the 2025 Inter-Island Environment Meeting.



## Natural Barriers

As an island facing rapid changes in climate and the increasing number of extreme weather events, nature's sea defences play an increasingly important role for our island. Sand dunes are by their very nature a self-repairing sea defence, absorbing storm waves and strong winds. To protect the sand dunes,

- A study was undertaken, by PhD student Sophie Mowbray, into the stability of the island's dunes with the [report published](#). This work will allow for the monitoring of changes in the dunes and will help warn the island if they are being lost in key areas.
- Over 21 cubic metres of invasive sour fig has been removed from Braye Harbour's dunes over the last 12 months, clearing them of any large areas of this problematic plant.



Storm clouds / Abigail de Castella



## Waste to Food Composting

The trial into how we can convert food waste into compost and improve soil health, made possible by Fort Group, has been up and running for the last eight months. This includes:

- Removing food waste products from all our own buildings
- Safely processing significant amounts of sour fig
- Utilising wood chip and sawdust from the Alderney Community Woodland
- The creation of compost which is now being assessed to ensure it is clean of any invasive plant seeds.

This has already removed several 100 kg of black bag and green waste from Alderney's community waste stream.



# Alderney Community Action for Nature

## Wilder Learning

- Ten sessions of Forest School and three Safe Campfire sessions for children and young people aged 5-12. They have the opportunity to explore Alderney's Community Woodland and learn about nature beneath the canopy, build a deeper nature connection, increase eco-literacy as well as increase their confidence and social skills whilst also benefitting their physical and mental health.
- 47 nature-based sessions have been delivered for 30 children aged 2-5 at St. Anne's Pre-school, connecting them with Alderney's nature at a young age.
- An art contest for children on Alderney was organised in celebration of World Ocean Day. Twelve artworks were on display for public viewing during Alderney Week.
- The AWT supported its Education Officer to acquire the Forest School Level 3 Leader certification.
- A cohort of active youth volunteers carried out tasks such as sour fig removal, tree planting and beach cleans.
- Successful Wilder Seas sessions connecting young people to marine survey methods



## Wilder Learning

- A small group of Year 4 students at St. Anne's School who speak English as an Additional Language was supported during their **Numeracy & Literacy** sessions **in the outdoors** from December 2024 to June 2025.
- Year 5 students at St Anne's School were supported through their Schools Across the Ocean Project and achieved **the Blue School Award**, a well-deserved recognition of its commitment to learning about and taking action for the ocean.
- In support of Alderney's young people undertaking their **Duke of Edinburgh Awards**, the AWT provided guidance to six students completing the volunteering section of their Bronze and Silver awards.
- A large group of students from Guernsey was supported in completing their **Duke of Edinburgh Gold Award**. They were working to repair the former Scout Hut.
- We supported two students with their work placements and three professional secondments for learning enrichment and skills sharing on Alderney. These included Anguilla National Trust, RSPB and Lancaster University.
- Successful trial of Forest School provision for those with additional needs.



Ocean documentary movie screening at St. Anne's School | Thanh Doan



Students volunteering as part of their Duke of Edinburgh Gold Award | Abigail de Castella



# Alderney Community Action for Nature

## Community Engagement



- The Wildlife Information Centre welcomed over **10,000 visitors** in 2025, engaging the public in learning about the island and its wildlife.
- Membership currently stands at approximately **600 members**, with income from membership subscriptions approx. £11,730 in 2024.
- **Fundraising:** Thanks to community support, our two Jumble Sales and six Pub Quizzes raised **over £3,200**.
- **Former Scout Hut repair:** We have taken on the former Scout Hut to save it from demolition. Having conducted the initial assessments the building has been repaired and is well on its way to being open for community use again in 2026. Special thanks to Alison Crawford, Nigel Clarke, Liam Aylward, Andy Mileham, Andy Clarke, and Blanchards for their generous support.
- We welcomed volunteers from Alderney Gambling Control Commission to act for nature!
- **Successful National Marine Week:** Around 250 people were engaged in learning about Alderney's seas and marine life. Marine tank sessions, three Ocean documentary screenings, and Shoresearch events were particularly well received.
- Hundreds of engagement activities including **boat trips, Bat & Hedgehog Walks, Wildlife Walks, a BioBlitz, FIT counts** were delivered, inspiring the public to learn about Alderney's nature.

# Alderney Community Action for Nature

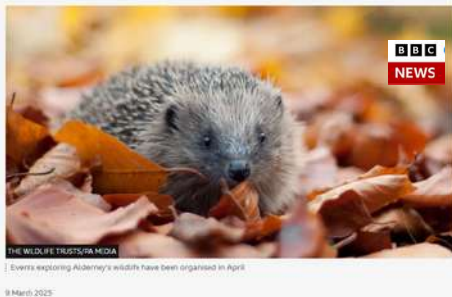
## Media

Alderney's wildlife, the AWT's conservation work and research visits made the news on multiple channels including BBC Channel Islands, BBC Guernsey, BBC Jersey, Discover Animals and Island FM.



TMB Article 09 Jul 2025

### Family wildlife events organised by charity



### One of Britain's rarest fungi has been found on Alderney

News Home | More from Guernsey News

Friday, 28 November 2025 16:38



### Gannets return to Alderney in annual migration



The first of the Northern gannets made landfall at about 12:00 GMT on Thursday

14 February 2025

### Sophie Mowbray Placement – Alderney Wildlife Trust

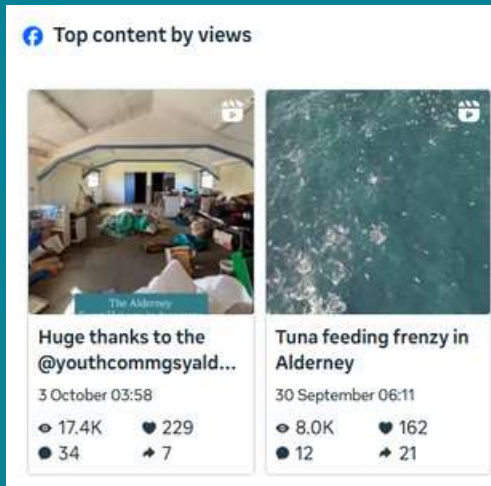
Posted on 21 Jul 2020 by Sophie Mowbray



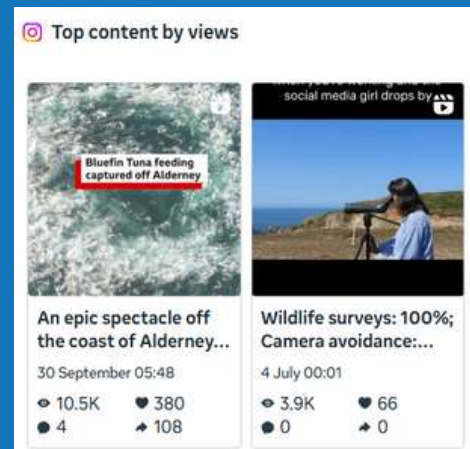
# Alderney Community Action for Nature | Social media

AWT has over **4,300 followers on Facebook**, while its Instagram account is followed by more than 2,700 unique accounts. Overall, posts about AWT's work in partnership with other organisations and Alderney's wildlife attracted the most views.

The highest reach on Facebook came from a reel showcasing the restoration of the Scout Hut, which attracted over 17,400 views.



On Instagram, viewers were most engaged by a co-posted drone video with BCC capturing a Bluefin tuna feeding frenzy, reaching 10,500 views.



On YouTube, the most-watched content included camera trap footage of birds and coverage of the Homecoming Woodland planting day.





# Looking into 2026

We will continue core activities for the Trust, including our annual programme of ecological survey work, weekly conservation volunteer sessions, and continued community engagement and education activities. In addition to this, we have established the priorities for each campaign for 2026:

**Alderney State of Nature Project:** in 2026 we will continue to analyse our monitoring data for the key habitats and species to understand how they are changing over time, whether they are at a favourable status, or whether conservation action is needed. This will then feed into annual action plans for the Reserves and Sites, AWT's work within the Ramsar Site, Wilder Learning and community engagement.

**Nature is the Solution:** the 2026 campaign includes moving forwards the Once and Future Woodland with a public and stakeholder process being run early in 2026. We will be working with landowners, the States of Alderney and funders from the charitable and private sectors. Our aim will be to establish and fund the first 5 years of the project.

**Natural Barriers:** we will build on the dune assessment of this year by assessing the health of the dunes and focusing on invasive species removal, with a focus on Saye.



## Looking into 2026 (Cont.)

For the **Alderney Community Action for Nature** campaign, in addition to regular educational and community engagement activities, we will complete the renovation of the former Scout Hut and hold the official launch of the building as “The Hut” as a resource for community use. Community engagement will begin to ensure the venue reflects community need and involves the island’s youth in its future. We are excited to see how this space develops and the opportunities it will bring for the whole community, as well as a permanent all-weather venue for Wilder Learning and connecting more people to the island’s North coast.

To make these future plans possible, we need to maintain the infrastructure of the Trust and secure funding and financial support from various resources. This is another challenge that we can’t overcome without the support of our members, donors and sponsors.

Thanks to the support of our community we are confident our actions for wildlife in 2026 will be the most impactful ever. Yet this only possible because of your help, be that direct, or indirect. Whether you are learning about nature, recording wildlife, volunteering, fundraising, giving or gardening in wildlife-friendly ways, every action makes a difference.



# Thank you

We extend our sincere gratitude to all volunteers, members, supporters, and partner organisations for their invaluable support in helping us study, champion, and protect Alderney's wildlife.

With your continued support, we are helping more people connect with nature and take meaningful action to sustain the island's natural environment and protect its wildlife.

- Individual volunteers, including wildlife volunteers, office volunteers, voluntary wildlife recorders, infrastructure-maintenance volunteers, and local wildlife photographers play a vital role in our work. The AWT couldn't make such an impact without your relentless support.
- Our work is made possible thanks to the generous support of organisations, charitable trusts, and individuals who provide vital funding, including [Social Investment Fund Guernsey](#), [The Sue Rouse Trust](#), [Chiswell Family](#), [Robin Whicker](#), [Heyworth Family](#), [The Fort Group](#), [Youth Commission for Guernsey and Alderney](#), [The Moorings](#), [Alderney Centre](#), [Isla & me by the sea](#).
- In collaboration with project partners including [Alderney Animal Welfare Society](#), [Alderney Bird Observatory](#), [Youth Commission for Guernsey and](#)

[Alderney](#), [Alderney Roots](#), [Alderney Society](#), [Visit Alderney](#), [St. Anne's Pre-school](#), [St. Anne's School](#), the [Blonde Hedgehog](#), [The Georgian House](#), [Blanchard Building Supplies](#), [Braye Beach Hotel](#), [Guernsey Nature Commission](#), [Guernsey Conservation Volunteers](#), [La Societe Guernesiaise](#), [Alderney Fire Brigade](#), [Manx Wildlife Trust](#), [Jersey Marine Conservation](#), [Marine Conservation Society](#), [Guernsey Biological Records Centre](#), the [Jersey Biodiversity Centre](#), [Agriculture, Countryside and Land Management Services \(States of Guernsey\)](#), and the [Natural Environment Department of the States of Jersey](#), we could engage more people to take action for wildlife and achieve more for nature.

- Thank you to the [States of Alderney](#), especially the [States Works Department](#), and [General Services Committee](#) for your joint efforts in site and reserves management, invasive species control, and Ramsar site protection. With your support, advice and action, the island's wildlife and environment are well cared for.
- Thank you to [Alderney Journal](#), [Riduna Radio](#), [QuayFM](#), [BBC Channel Islands](#), and other news organisations for bringing wildlife news from Alderney to the island's residents and the wider Channel Islands community.







Front cover: Looking over Les Etacs | Niamh McDevitt  
Back cover: Gannet | Joshua Copping

# *Champion, Study, Protect*

An Alderney Charity (Guernsey Charities Register No. CH261)

Tel: 01481 822 935

Email: [admin@alderneywildlife.org](mailto:admin@alderneywildlife.org)

Facebook: ALDERNEY WILDLIFE TRUST

Instagram: [@alderneywildlifetrust](https://www.instagram.com/alderneywildlifetrust)

YouTube: [@alderneywt](https://www.youtube.com/alderneywt)

