

Rockpool spotter sheet

Always place rocks back where you found them and the right way up.
Handle creatures with care and respect.



Limpet



Flat top shell



Shell like a
perfect cone

Painted top shell



3 dark spots on its back
and a ridged shell

Spotted cowrie



Often found on kelp at
low tides

Blue-rayed limpet



Periwinkle



Dog whelk



Netted dogwhelk



Warty venus



Variegated scallop



Green ormer



8 arched
plates

Chiton



Sea hare



Sap-sucking slug



Aeolidiella sp.

MOLLUSCS

Rockpool spotter sheet

Always place rocks back where you found them and the right way up.
Handle creatures with care and respect.



Edible crab /
Chancre crab



Shore crab



Rear-most legs are flattened
like paddles

Red eyes

Velvet swimming
crab



Furrowed crab



Covered in tiny hairs

Broad-clawed
porcelain crab



Hermit crab

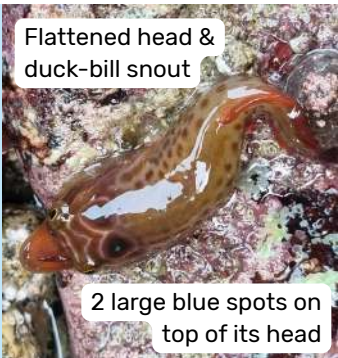


Squat lobster



Common prawn

CRUSTACEANS



Flattened head &
duck-bill snout

2 large blue spots on
top of its head

Shore clingfish

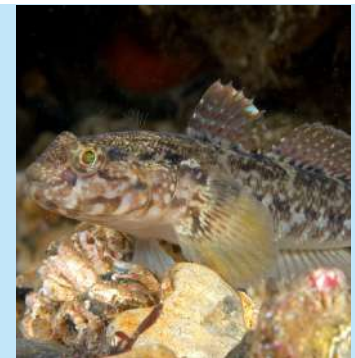


Can change colour to
match its surroundings

Shanny



Tompot blenny



Rock goby



Pipefish



Topknot



Giant goby



Three sensory barbels
protruding from the mouth

Three-bearded
rockling

FISH

Rockpool spotter sheet

Always place rocks back where you found them and the right way up.
Handle creatures with care and respect.

SEA ANEMONES



Beadlet anemone



Snakelocks anemone



Strawberry anemone



Daisy anemone

WORMS



Lugworm



Scale worm



Candy striped flatworm



Green leaf worm

ECHINODERMS



Cushion star
Asterina gibbosa



Cusion star
Asterina phylactica



Shore sea urchin



Brittle star

SEA SQUIRTS



Spiny starfish



Common starfish



Light-bulb sea squirt



Star ascidian

Rockpool spotter sheet

Not commonly seen species

Always place rocks back where you found them and the right way up.
Handle creatures with care and respect.



Seven-armed starfish

Luidia ciliaris

- Orange colouration
- Seven long arms that start to taper near their tips
- Found on sandy and stony sea beds



Bootlace worm

Lineus longissimus

- Colouration is dark brown to almost black
- 5-30 m long when extended
- The head is only slightly wider than the rest of the body



Gem anemone

Aulactinia verrucosa

- Often found in lower shore rock pools
- The usual colouration is a blend of pink and grey with green markings around the mouth



Rosy feather star

Antedon bifida

- 10 feathery arms, 5-10cm in length
- Usually red and white in colour, sometimes looking mottled
- Occasionally observed at the level of the lowest spring tides