



# Media Release from Alderney Wildlife Trust

Date: 06/11/2023

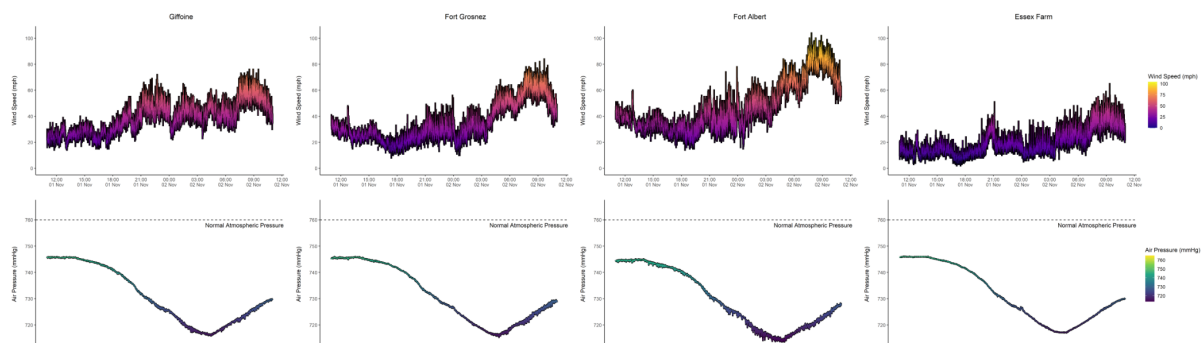
## AEI's new weather stations put to the test by Storm Ciarán

The arrival of Storm Ciarán in Alderney on Thursday 1st November has put the new Alderney Electricity weather stations to the test across the island. The Alderney Wildlife Trust has studied the data recorded by these stations during the extreme weather.

These four new weather stations have been installed at various points across the island - Fort Albert, Essex Farm, Fort Grosnez and the Giffoine - and have already proven that having accurate weather data on-the-ground helps to better understand the effect of extreme events on our wildlife. At its peak, data from the station on the Giffoine showed that high gusts (76 mph) were over 15 mph faster than some forecasts for Alderney airport, while the more sheltered Essex Farm site near Longis nature reserve was gusting 30 mph lower at the same time. Fort Albert recorded a gust of 104mph, which was the highest recorded in Alderney during the storm. This data helps us to more accurately understand the pressures facing wildlife in different places on our island, giving us context to understand why populations might change over the next year, something we will continue to assess through long-term monitoring programmes.

The AWT's ecological work is focused on collecting key data to help Alderney understand and respond to issues including climate change. If you would like to know more, get in touch with the AWT's ecologist Matt by emailing [ecologist@alderneywildlife.org](mailto:ecologist@alderneywildlife.org)

The below graphics from the four weather stations across the island clearly show the change in barometric pressure and wind speed as Storm Ciarán approached the island and during the height of the storm.



James Lancaster, Managing Director, Alderney Electricity comments:

*“AEL installed the weather stations to explore the potential for renewable energy generation in line with the Island Plan and Energy Policy. It is great that the data is also being put to other uses, tracking the immediate impact of weather events like Storm Ciarán or following longer term climatic trends.”*

You can view live weather updates from the four stations at [www.alderney-elec.com](http://www.alderney-elec.com)

Ends

## Background

---

### **About the Alderney Wildlife Trust**

The Alderney Wildlife Trust is one of the 46 Wildlife Trusts working across the British Isles. We are the youngest of the Wildlife Trust, forming 20 years ago and since then the AWT has received incredible support from a dedicated team of wildlife enthusiasts, what we like to think of as the ‘TeamWilder’. This team isn’t just limited to residents and AWT members, it includes people from all walks of life who have an interest in our island’s wildlife, as well as supporters and organizations from around the world. We work with the local community to engage them with their natural environment in order to protect Alderney’s wildlife for the future.

Our mission is to study, protect and champion Alderney’s wildlife. We wish to see a thriving natural island where wildlife and natural habitats play a valued role in addressing our island’s future and the climate and ecological emergencies that face us.

***Alderney is a very special place and by helping the work of the Alderney Wildlife Trust you can make a difference. After all, if you love where you live, you’ll want to look after it - Dr. George McGavin, Patron AWT***

## Notes to Media

---

For further information, please contact:

Paul Belben

[communications@alderneywildlife.org](mailto:communications@alderneywildlife.org)